


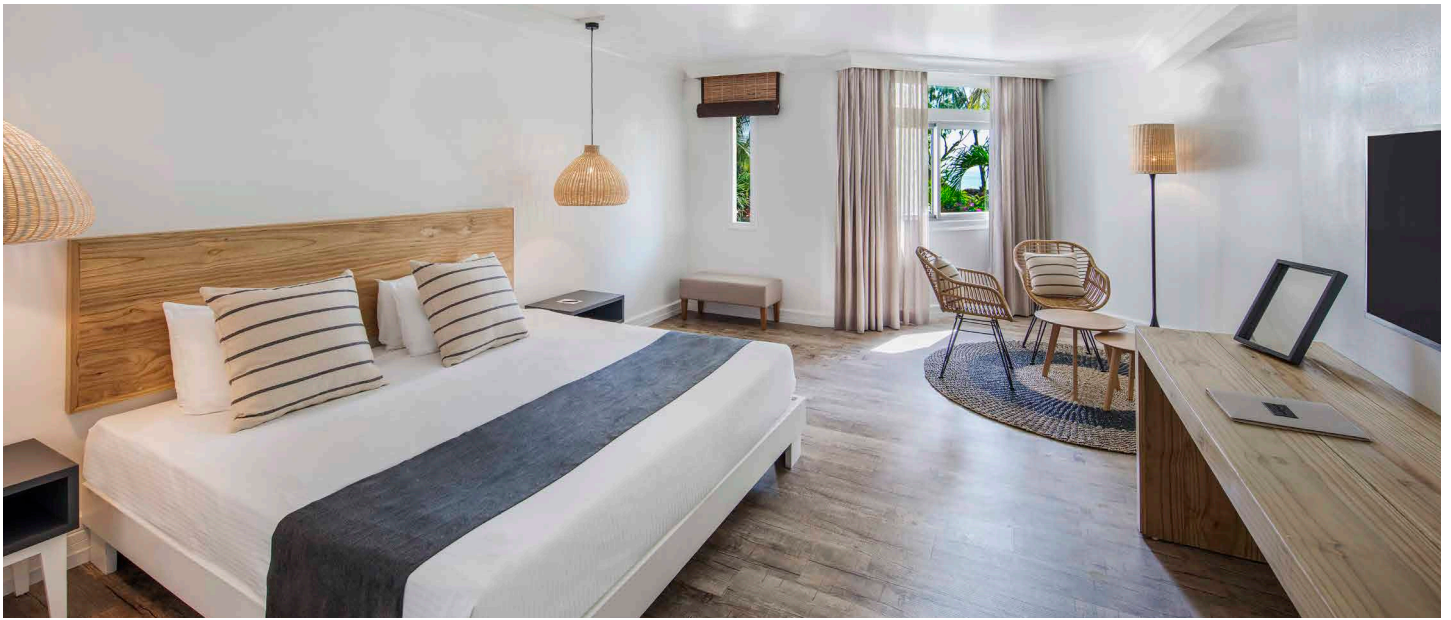
# ambre

MAURITIUS

A LIFE LED IN THE SUN,  
A LIFE ENJOYED WITH STYLE

A wide-angle photograph of a tropical beach. In the foreground, two large, round, wicker lounge chairs with cushions sit on the white sand. Behind them, a row of thatched umbrellas and lounge chairs stretches along the beach. The background is filled with tall palm trees and a clear blue sky. The water is calm and light blue, meeting the shore on the right side of the frame.

Located at Palmar, on the untamed east coast of Mauritius, the four-star resort is an adults-only haven radiating Mauritian character and the bliss of escapism. Set on a 700-metre-long white sand beach, unfurling into a sparkling tropical lagoon, the resort is a castaway wonderland that houses 297 rooms.



## ACCOMMODATION

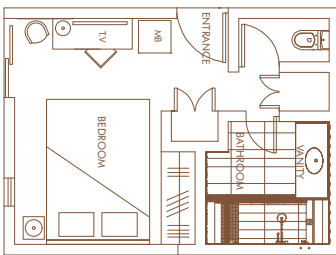
### ALL THE SUITES ARE EQUIPPED WITH THE FOLLOWING FACILITIES:

- Individually controlled air-conditioning
- Bathroom amenities, hairdryer and slippers
- Wi-Fi access
- Mini-bar with tea and coffee facilities
- Electronic safe

#### Courtyard Room-20 m<sup>2</sup>

Situated in the southern wing and offers rooms on the ground floor, first floor, and second floor.

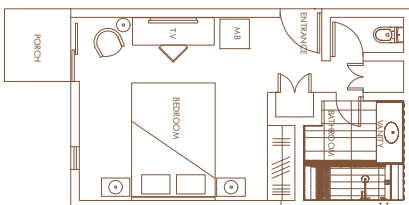
**Room occupancy: 2 adults**



#### Superior Room-30 m<sup>2</sup>

Positioned in the northern wing and provides rooms on the ground floor, first floor, and second floor with a balcony or terrace.

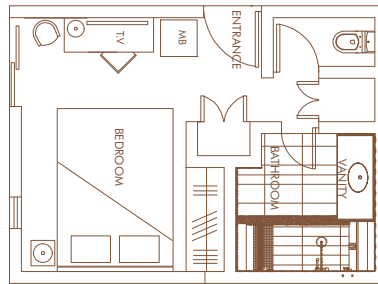
**Room occupancy: 2 adults**



#### Superior Sea facing Room-30 m<sup>2</sup>

Situated in the southern wing and offers rooms on the ground floor, first floor, and second floor with a balcony or terrace.

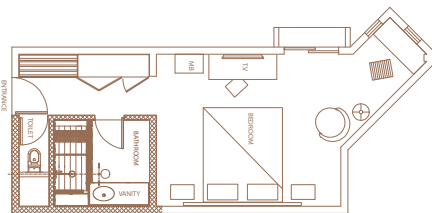
**Room occupancy: 2 adults**



#### Deluxe Sea facing Room-42 m<sup>2</sup>

Available on the first floor or second floor and come with the option of twin or king-size beds. Additionally, each room includes one extra bed.

**Room occupancy: 3 adults**

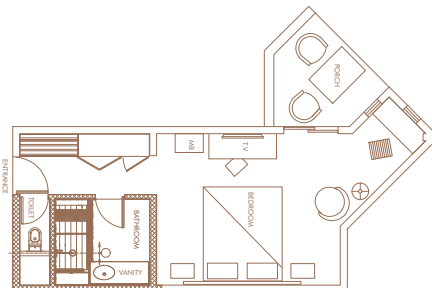


#### Deluxe Beach Room-42 m<sup>2</sup>

Available on the ground floor or first floor, with a choice of twin or king-size beds.

Each room includes one extra bed.

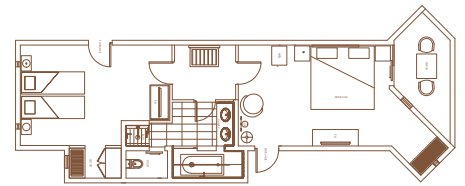
**Room occupancy: 3 adults**



#### Deluxe Suite-72 m<sup>2</sup>

Available on the ground floor or first floor and feature separate shower and bathtub facilities with either balcony or terrace.

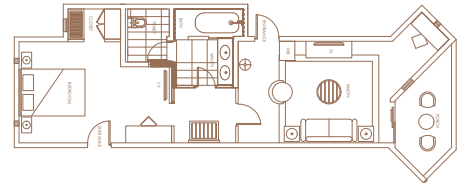
**Room occupancy: 3 adults**



#### Ambre Suite-80 m<sup>2</sup>

Situated on the first floor and offers separate shower and bathtub amenities. Include a living room and a balcony. Additionally, the room provides convenient access to the beach.

**Room occupancy: 2 adults**



## ROOMS & SUITES POLICY

- Check-in time is at 2 pm and Check-out is at 12 pm (subject to availability, early check-in and late check-out options are offered at an additional cost)
- Room service (not included in the All-Inclusive Package)
- Laundry, dry-cleaning and pressing service (at a cost)

# RESTAURANTS

Meal Plan	BREAKFAST			LUNCH		DINNER		
	HB	FB	AI	FB	AI	HB	FB	AI
<b>Indigo Restaurant</b>	6.30 am – 10.30 am			12.30 pm – 3 pm		6.30 pm– 10 pm		
Main restaurant with lively-themed nights	✓	✓	✓	✓	✓	✓	✓	✓
<b>Dolce Vita Restaurant</b>				12.30 pm – 3 pm		6.30 pm– 10 pm		
Italian à la carte in a trattoria-style setting				✓	✓	★ Rs 900 food credit for speciality chef menu	★ Rs 900 food credit for speciality chef menu	★ Rs 900 food credit for speciality chef menu
<b>La Plage Restaurant</b>				12.30 pm – 3 pm		6.30 pm– 10 pm		
Mauritian and Mediterranean fusion in an Alfresco setting				✓	✓	★ Rs 900 food credit for speciality chef menu	★ Rs 900 food credit for speciality chef menu	★ Rs 900 food credit for speciality chef menu
<b>Beach Service</b>				12.30 pm – 3 pm				
Beach & Pool Menu				✓	✓			

✓ Included ★ Selected items

## ADD-ONS FOR OUR ALL-INCLUSIVE PACKAGE:

### Mini bar (One refill per day)

- Soft drinks, juices, water and beers

### Beverages

- Choice of imported quality wines (red/white/rosé) and sparkling wines
- Choice of locally bottled and selected imported spirits (whiskey, gin, vodka, martini, brandy, rums and liquors)
- Choice of cocktails, local beers, mineral water, soft drinks & milkshakes.

### Conditions

- The All-Inclusive package starts at check-in and ends at check-out.
- Drinks/food not indicated as part of the "Sun Inclusive Holiday Package" (as per menu card) are not included.
- For personal consumption only – Signature is required for control purposes for all consumptions.
- Lunch snack boxes for excursions available upon request (24 hours' notice required). Picnic-packed lunches are not allowed at Ile aux Cerfs Golf Club.
- Compulsory "All-Inclusive Day-Pass" fee payable at Reception for any visitor wishing to join in-house guests.
- Groups and Incentives (please refer to our separate "Sun-Inclusive Group All-Inclusive Fact Sheet").
- All Inclusive does not apply for Ile aux Cerfs.



## BARS

### Coral Pool Bar

Open from 9 am to 12 am  
From a morning green juice to a night-time spritz, Coral Pool Bar is the place to rehydrate, rejuvenate and relax. Guests on the All-Inclusive meal plan can enjoy an Afternoon Tea every day as from 3 pm to 5 pm.

### Ti Bar

Open from 10 am to 11 pm  
Our informal sundowner cocktail bar on the beach

### Beach Service

Serving drinks from 10 am to 6 pm  
Meet our Beach Squad, a dynamic team of dedicated beach buddies ready to serve your every beachside need.

### H&H Lounge Bar

Open from 6 pm to 2 am  
(Beverages at a charge after 12 am)  
The place to enjoy an array of tasty drinks, catch a sports game or for those included, karaoke.

### Shakers Night Club

Open from 11 pm to 2 am on selected days

### Dress code in restaurants & bars:

Casual chic in all our restaurants for dinner.

# SPORTS, LEISURE & WELLNESS

	LAND ACTIVITIES	WATER ACTIVITIES *
FREE	Stretching, Bocce Ball, Body Pump Table Tennis, Beach Tennis, Beach Volley, Beach Soccer, Tennis (tennis balls are with supplement), Aqua Gym, Sports Tournaments	Kayaking, Laser Sails, Glass-Bottom Boat Trips, Snorkelling, Windsurfing, Paddle, Stand-up Paddle, Pedal Boats
EXTRA COST	Bike Rental, Bike Tours, Private Tennis Lessons	Big-Game Fishing**, Water Skiing**, Banana Boat**, Super Tube Rides**, Giant Catamaran Outings**, Discovery Excursions, (submarine dives and dolphin)**

\*All free water activities are on a first-come, first-served basis and those with a supplement, require a 24 hours booking (opening hours: 9 am to 5 pm)

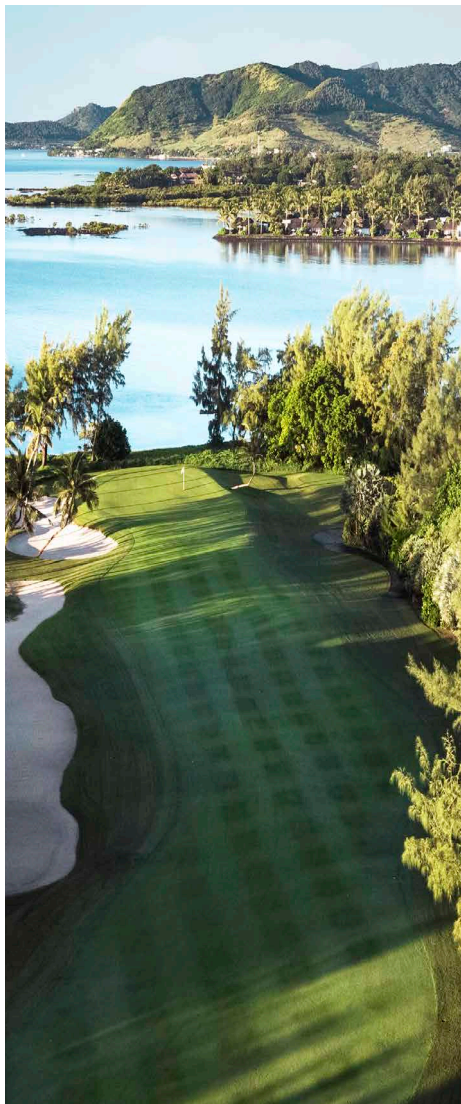
\*\*Booking and payment should be made directly with our partners.

## GOLF

### Ile aux Cerfs

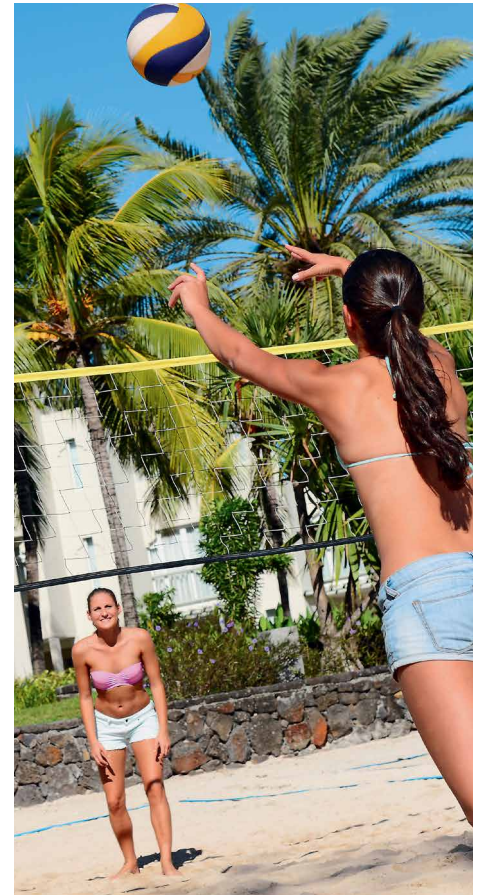
Ile aux Cerfs is a picturesque island spread over 87 hectares of untouched land off the east coast of Mauritius.

- Free and unlimited green fees at Ile aux Cerfs Golf Club, including free land and boat transfers at Pointe Maurice Jetty (within operating hours). Free daily golf initiation at 11 am at Ile aux Cerfs Golf Academy.
- Set lunch menu for All-Inclusive guests available.



## TROPICAL SPA

Unwind at Ambre's Tropical Spa, set in a tranquil corner of the resort, with the beach and cyan ocean just metres away. The spa features a romantic outdoor area with two gazebos where you can indulge in a spa treatment while contemplating the ocean. To complement this authentic tropical experience, you can unwind in the steam room, sauna or bubble pool. Opening hours: 8.30 am to 7 pm



## PRACTICAL INFORMATION

### Other services

- Free Wi-Fi throughout the resort
- Boutique: open every day from 9 am to 7 pm
- Shower and luggage rooms for arrivals and departures
- 2 function rooms for corporate or private events:
- Ambre Conference Room: 155 m<sup>2</sup> – 90 pax in theatre style
- Palmar Conference Centre: 425 m<sup>2</sup> – 300 pax in theatre style
- On-site medical room
- Parking, taxi and car rental facilities
- Foreign currency exchange facilities at the reception
- Credit cards accepted: American Express, MasterCard, Diners Club and Visa
- A post box is available at the reception desk. Stamps and postcards are available for purchase at Ambre Gift Boutique.

### TERMS & CONDITIONS

- Families, guests sharing rooms or travelling as a party must book the same package (also applies for children).
- No compensation in cash or any kind will be offered for non-consumed items.
- Guests residing at the hotel are requested to inform Reception when expecting a visit so that prior arrangements can be made.
- The hotel reserves the right to close any restaurant for / or during special events and due to bad weather conditions.
- Changes in selections, hours, accessibility or availability are possible at any time without prior notice.
- We reserve the right to increase our rates in the event of increased government taxation.

# RESORT LAYOUT

- 1 Main Entrance
- 2 Lobby
- 3 Reception
- 4 Life in Yellow boutique
- 5 H&H Lounge & Shakers Nightclub
- 6 Conference Room
- 7 Ambre Hospitality Lounge
- 8 Medical Room
- 9 Parking
- 10 Fitness Centre
- 11 Bicycle Shed
- 12 Dolce Vita Restaurant
- 13 Lap Pool
- 14 Main Pool
- 15 Indigo Restaurant
- 16 Coral Bar
- 17 La Plage Restaurant
- 18 Towel Kiosk
- 19 Ti-Bar
- 20 Water Sports Centre
- 21 Beach
- 22 Tennis Courts
- 23 Outdoor Massage Kiosk
- 24 Spa
- 25 Palmar Conference Centre



## ROOMS

BLOCK	SOUTH WING
800 - 837	<span style="color: green;">■</span> COURTYARD ROOM (18) <span style="color: blue;">■</span> SUPERIOR SEA-FACING (18)
700 - 717	<span style="color: green;">■</span> COURTYARD ROOM (8) <span style="color: blue;">■</span> SUPERIOR SEA-FACING (18)
100 - 191	<span style="color: orange;">■</span> DELUXE SEA-FACING (78) <span style="color: brown;">■</span> DELUXE SUITE (10) <span style="color: brown;">■</span> AMBRE SUITE (1)

BLOCK	NORTH WING
200-260	<span style="color: brown;">■</span> DELUXE SEA-VIEW (39) <span style="color: brown;">■</span> DELUXE SUITE (7) <span style="color: brown;">■</span> AMBRE SUITE (1)
300-316	<span style="color: green;">■</span> SUPERIOR ROOM (8) <span style="color: orange;">■</span> DELUXE SEA-FACING (1) <span style="color: blue;">■</span> DELUXE SEA-VIEW (7)
400-416	<span style="color: green;">■</span> SUPERIOR ROOM (8) <span style="color: blue;">■</span> DELUXE SEA-VIEW (1) <span style="color: blue;">■</span> DELUXE SEA-FACING (7)
500-548	<span style="color: green;">■</span> SUPERIOR ROOM (24) <span style="color: blue;">■</span> DELUXE SEA-FACING (24)
600-616	<span style="color: green;">■</span> SUPERIOR ROOM (8) <span style="color: blue;">■</span> DELUXE SEA-FACING (8)

ROOM CATEGORIES	QUANTITY	IN BLOCK
COURTYARD ROOM	26	700 / 800
SUPERIOR ROOM	48	300 / 400 / 500 / 600
SUPERIOR SEA-FACING	26	700 / 800
DELUXE SEA-FACING	157	100 / 200/ 300 / 400 / 500 / 600
DELUXE SEA-VIEW	21	200 / 300 / 400
DELUXE FAMILY SUITE	17	100 - 191 / 200-260
AMBRE SUITE	2	175 / 225