

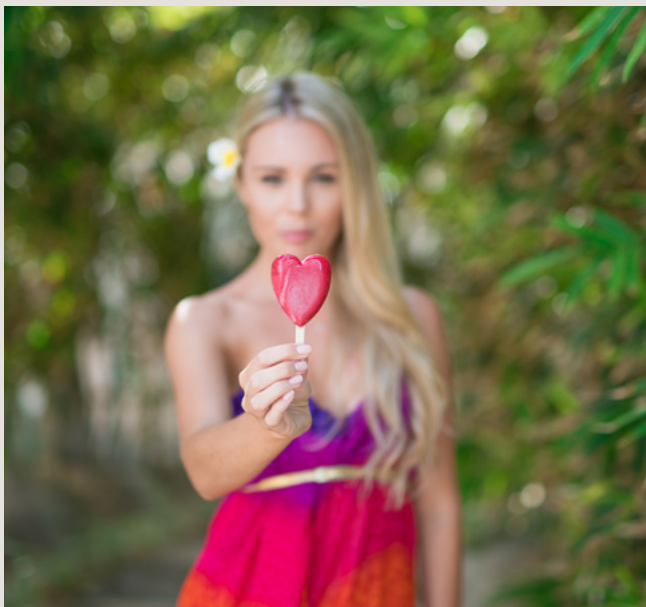


LUX\* BELLE MARE, MAURITIUS

# SUSTAINABILITY INITIATIVES



From supporting a local NGO that cares for patients with Thalassemia, blood donations, “No bin days” at our Team Members’ restaurant to partnering with animal protection NGOs, the wellbeing of the community is the focus at LUX\* Belle Mare.



## CSR WITH RAY OF LIGHT

Our Ray of Light umbrella project allows us to deliver on numerous UN Sustainable Development goals for the empowerment of women and girls, people with disabilities or children in need of access to quality education. All our resorts have long-term affiliations with at least one social empowerment NGO.



## REDUCE FOOD WASTE

We came up with “No bin days” at our Team Members’ restaurant to raise awareness on food waste. At Beach Rouge, our menus are split into Hungry and Hungriest depending on one’s appetite. Within the first three months, we reduced the food waste per cover by half.



## KEEN ON GREEN

What’s on our plate and how it gets there matter. We challenged our chefs to think how we can source more thoughtfully and make food a force for good. That’s how Keen on Green came to be. Vegetarians, vegans, and even die-hard meat-eaters can order our delicious plant-based dishes labelled in green on our menus in all of our restaurants.



## PLAY

At PLAY, our mindful and modern kids club, we imagined activities such as gardening and harvesting, cooking with local produce as well as activities that integrate local customs and traditions. These all revolve around our five pillars: Eat well, Move, Care, Feel, and Create



## LIGHTS AND TEMPERATURE

Preventive and regular maintenance contribute towards energy conservation, and investments have also been made to replace halogen bulbs with LED lighting. Heat, cool, light, and power TVs for a room with no one in it? LUX\* Belle Mare came up with a smart solution: an Energy Management Systems Rooms (EMS) to optimize our guest experience while maximizing energy savings.



## BOTTLED WATER

Over a thousand plastic bottles are thrown out per second in the world. LUX\* Belle Mare recognises that small changes can ultimately make a big difference. To this end, we continue to bottle our water in reusable water bottles to fight against single use plastic. We offer reusable water bottles to our guests on arrival and a Nordaq refill system, a sustainable solution for premium water, will be installed for guests to refill their bottle throughout their entire stay.



## DESALINATION PLANT AND RECYCLED WATER

Our resort is able to recycle and reuse up to 50% of their water consumed. 100% of the water treated after use goes to the irrigation of our gardens. Recycling water contributes to reducing fresh water supply consumption and while we continue to implement new actions to reduce our water consumption, we will operate a desalination plant.



## PARTNERSHIP WITH THALASSEMIA SOCIETY MAURITIUS

Thalassemia is a life-long disease and if left untreated, can lead to severe debility and death. Blood transfusion is a lifeline for survival of thalassemia patients. At LUX\* Belle Mare, we invite our guests to donate at our Tree of Wishes. We also organise awareness sessions in Mauritius and support blood donation campaigns.



## WASTE, RECYCLING AND UPCYCLING

LUX\* Belle Mare is cutting down waste. While we have systems in place to reduce our waste generations, we ensure that waste is segregated and recycled or upcycled.



## AWARDED BY THE PLEDGE ON FOOD

LUX\* Belle Mare affirms its commitment to operate as a responsible business, to reduce its impact on the environment and to adopt sustainable practices by embracing the PLEDGE™ on Food Waste Certification.



## BIODIVERSITY ON LAND AND UNDER WATER

We partner with the Mauritius Wildlife Foundation, an NGO devoted to the conservation of the island's most endangered plants and animals.



## PEOPLE: HUMAN RIGHTS

Our team members are from all different nationalities, orientation, gender, religion and ethnicities. Our resort has adopted a series of Human Rights principles: regular awareness sessions and trainings are organized yearly for all.



## KEY ANNUAL SUSTAINABILITY EVENTS WHERE GUESTS CAN PARTICIPATE

At LUX\* Belle Mare, we love our planet. That's why we partnered with a local NGO, Ecosud, to organize sessions for the awareness of marine protection.



## BUILT TO CARE PROJECTS

- We care for animals. That's why we collaborate with a group of committed animal lovers to save our street animals in need of a home. Throughout the whole year, we help them through sterilization, adoption, donation and even free consultations for our team members animals.
- Our resort organizes blood donation campaigns throughout the whole year, every year.
- Because we care about the health of our planet and its people, we built our very own farm where we grow dozens of different crops, herbs, tomatoes, greens and tropical fruit.

# A CLEANER FUTURE FOR ALL

The Lux Collective has responded to the UN's call to action, following the IPCC's (Intergovernmental Panel on Climate Change) alarming report on climate change and its impact on the world. The Lux Collective has joined the global movement via a Business Ambition for 1.5°C Pledge and a Science Based Targets Call-to-Action Commitment Letter ratified by our CEO on 2nd October 2019. The 1.5°C objective will alleviate the Earth of GHG (Greenhouse Gas) effects, by cutting global GHG emissions by 50% by 2030 and achieving netzero emissions by 2050.

Our Group project *Tread Lightly*, has existed since 2011. In 2019 it was aligned with this ambitious 1.5°C goal.

Tread Lightly invites guests to join us on our journey towards zero-emissions. Our resort emissions are measured by the firm Altruistiq and we are together developing our plans to cut CO2 emissions. For a small donation of 1 Euro per night spent with us, our guests can join us in measuring, tracking, and reducing our common footprint.

We support biodiversity conservation projects, contribute towards UN registered projects in Africa and Asia such as afforestation of the virgin forest with 50,000 trees, or protecting the endangered snub-nosed monkey in Yunnan, China. By bottling our own water in reusable glass bottles, we estimate that our group avoids the plastic waste of nearly 1 million bottles per year.

We also invite our guests to tour the destinations and favour trips to the endemic forests and protected areas of Mauritius with our trusted ecologist partners, such as Ile Aux Aigrettes, Ebony Forest and Blue Bay Marine Park nursery, three projects we are very fond of. All our resorts have long-term affiliations with at least one biodiversity conservation NGO.

## *CSR with Ray of Light*

Our Ray of Light umbrella project allows us to deliver on numerous UN Sustainable Development goals for the empowerment of women and girls, people with disabilities or children in need of access to quality education. All our resorts have long-term affiliations with at least one social empowerment NGO.

*Altruistiq is a GHG emissions data management platform that enables businesses to make better sustainability decisions. They are on a mission to transform how organisations make data-driven decisions that benefit their business and the planet*

*www.altruistiq.com*